

<b>POSITION TITLE:</b>	<b>Victim Support Worker: Family Violence Practitioner Gippsland region</b>
<b>FTE:</b>	<b>1.0</b>
<b>CLASSIFICATION:</b>	<b>Band 3.1.2</b>
<b>DIVISION:</b>	<b>Trauma and Recovery, Community Services and Business Development</b>
<b>PROGRAM:</b>	<b>Victims Assistance Program</b>
<b>LOCATION:</b>	<b>Hybrid, in accordance with the Windermere Ways of Working with your primary location being Gippsland, including outreach to support consumers. Windermere reserves the right to request you to work at any Windermere location, including our main offices at Narre Warren and Pakenham.</b>
<b>TENURE:</b>	<b>18 July 2025 (Fixed Term Contract)</b>
<b>DATE:</b>	<b>September 2024</b>

## 1. ABOUT WINDERMERE

Windermere is an independent, not for profit community service organisation working across Victoria including key regional locations, to help those who need it most. Established in 1992, our aim remains constant; to build stronger, connected and supported communities.

Working together with our community, we deliver many services through critical partnerships with government to meet our purpose.

We aim to get in early to help children, families and individuals find the best solutions for their varied and complex issues.

Our support comes in many forms with a focus on intervention, prevention and education to make a difference in the areas of:

1. **Family Wellbeing** by promoting positive behavioural changes, providing parenting supports and responding to violence and/or neglect to achieve safety and stability
2. **Disability Support** by providing assistance to identify the right supports and goals that matter most to enable people of all abilities to actively participate in their communities
3. **Development & Early Childhood Education** by delivering accredited quality early childhood and care services and specialist early intervention services to help children reach their full potential
4. **Victims Assistance** by providing timely and ongoing practical and emotional support for victims of trauma, assault and/or violent crime
5. **Community Strengthening** by mobilising support services to respond quickly to emergencies, disasters and emergent needs.

We believe that everyone is someone in our community and this is reflected in our approach with those we work with every day.

## 2. OUR PURPOSE, VISION AND VALUES

### Our Purpose:

We get in early to make a difference in the lives of individuals, families and communities.

**Our Vision:**

A stronger, connected and supported community.

**Our Promise:**

Our many services working together with you for a better life.

**3. KEY RESULT AREAS, RESPONSIBILITIES AND PERFORMANCE MEASURES**

Key Result Areas	Responsibilities	Performance Measures
<b>Operate as a FV victim support worker in the VAP program</b>	<ul style="list-style-type: none"> <li>• Respond to victims of crime impacted by family violence, including risk assessment and management, referral to specialist services as required.</li> <li>• Provide consultation and support to VAP team members as required in their support to victims of crime impacted by family violence – building confidence in their risk assessment and management, as well as their identification of services to meet the needs of victim survivors.</li> </ul>	<ul style="list-style-type: none"> <li>• Victims of crime impacted by FV receive a tailored service focused on their safety and recovery.</li> <li>• The VAP team demonstrate increased capability and confidence in worker with victims of crime impacted by FV, including the use of MARAM tools</li> </ul>
<b>Community Engagement and Consultation</b>	<ul style="list-style-type: none"> <li>• Engage and educate external stakeholders about VAP, building understanding of the Victims Charter, the role of victims' assistance with victims of family violence, highlighting the needs of male victims of FV.</li> </ul>	<ul style="list-style-type: none"> <li>• External Stakeholders have increased understanding of the VAP program and the needs of male victims of FV.</li> </ul>
<b>Operational day to day service provision of VAP services</b>	<ul style="list-style-type: none"> <li>• Assist victims to effectively manage the damaging consequences of violent crime.</li> <li>• Provide a high-quality holistic service that meets the practical, physical, emotional, and psychological needs of victims.</li> <li>• Provide psychological first aid to victims as required.</li> <li>• Complete a care plan for the victim.</li> <li>• Complete a risk assessment for the victim.</li> <li>• Link victims with community resources as per their care plan.</li> <li>• Advocate on behalf of the victim as required and appropriate.</li> <li>• Attend appointments with victims including medical and legal as required.</li> </ul>	<ul style="list-style-type: none"> <li>• Complete all program specific administrative tasks within the required time frames.</li> <li>• All data is entered to RESOLVE as per program KPI's.</li> <li>• Complete intake and assessment paperwork.</li> <li>• Victim details including case notes entered within 3 working days.</li> <li>• Care plans drawn up as discussed with victim, subject to regular monitoring and review.</li> <li>• Assist in the review of the resource directory.</li> <li>• Provide Intake as per rostered duty.</li> <li>• Provide Outreach services in response to victim preference and at other nominated sites.</li> <li>• Provide consistent information in relation to the criminal justice</li> </ul>

	<ul style="list-style-type: none"> <li>• Liaise with other victim services including Family Violence and Sexual Assault Services.</li> <li>• Utilise brokerage to purchase goods and services as identified in the care plan.</li> <li>• Contribute to the design and implementation of the community education program.</li> <li>• Attend relevant network meetings as delegated by the Coordinator or Manager.</li> <li>• Undertake Intake and Assessment duties as required as part of the VAP team (will occur from time to time on a rostered basis).</li> <li>• Provide service in accordance with relevant legislation and the Victims Charter Act 2006.</li> <li>• Provide service in accordance with the DOJCS Service Standards, Program Guidelines, and Practice Manual for Victim Support Services Victoria.</li> <li>• Provide service in accordance with Windermere VAP internal processes and work instructions.</li> <li>• Keep accurate and up to date consumer files and case notes – assist with RESOLVE data management.</li> <li>• Seek guidance and advice in relation to difficult situations within an appropriate time frame from the VAP Team Leader and/ or Manager.</li> </ul>	<p>system, VOCAT and other legal processes.</p> <ul style="list-style-type: none"> <li>• Liaise with other service providers including psychologists.</li> <li>• Research current literature re community education programs in relation to impact of violent crime on individuals, families and the community.</li> <li>• Seek out opportunities to inform and advocate.</li> </ul>
<p><b>Team Responsibilities</b></p>	<ul style="list-style-type: none"> <li>• Develop and maintain professional relationships with internal and external stakeholders.</li> <li>• Assist in the induction and mentoring of new staff in relation to case management procedures.</li> <li>• Complete other duties as requested by VAP Team Leader and/or Manager.</li> <li>• Positively contribute to the culture and spirit of the VAP team, work environment and to Windermere.</li> <li>• Contribute to productive and positive team meetings.</li> </ul>	<ul style="list-style-type: none"> <li>• Contribute to the development of procedures and systems within this program.</li> <li>• Submit time sheets on time. Apply for all leave on ConnX and provide all supporting documents.</li> <li>• Positively embrace and adopt change as it occurs.</li> </ul>

<p><b>Quality and Risk</b></p>	<ul style="list-style-type: none"> <li>• Provide VAP services in accordance with Windermere Policy &amp; Procedures.</li> <li>• Understand and implement VAP DOJCS service standards and accreditation standards.</li> <li>• Participate the provision of quality outcomes for consumers through review and audit of relevant feedback – audits, complaints/compliments &amp; accreditation processes.</li> <li>• Participate in quality and accreditation self-assessment(s) and support implementation of agreed improvements.</li> <li>• Actively participate in the risk management process including identification and analysis, control of deficiencies and escalating where required.</li> <li>• Manage complaints or grievances within Windermere policies.</li> </ul>	<ul style="list-style-type: none"> <li>• Ensure policies, procedures and codes are complied with at all times.</li> <li>• Ensure work practices comply with Windermere’s Continuous Quality Improvement principles.</li> <li>• To positively embrace and adopt change as it occurs.</li> <li>• As outlined in the Code of Conduct ensure all interactions are undertaken in accordance with the behaviours set</li> </ul>
<p><b>Organisational expectations and directives in relation to policies and procedures and the organisation’s purpose, vision and values.</b></p>	<ul style="list-style-type: none"> <li>• Familiarise yourself with and adhere to Windermere’s Policies and Procedures, including the Code of Conduct, Human Resources policies and guidelines and Occupational Health and Safety obligations.</li> <li>• Demonstrate dedication and commitment to work in accordance with Windermere’s values and behaviours.</li> <li>• Attend prearranged dates scheduled for supervision and organisation wide training, including organisation forums and on line induction and be actively involved in the 6-week induction review, 3 and 6-month probationary reviews and a recurring annual performance review with the relevant supervisor.</li> <li>• Contribute to or participate in Continuous Quality Improvement (CQI) activities of the organisation, and will implement CQI strategies into their work practices.</li> <li>• Meet the challenges of change as it occurs within the service and organisation.</li> <li>• Attend or complete foundation and position specific training courses set by the organisation and attend or complete discretionary training as approved by the supervisor.</li> </ul>	<ul style="list-style-type: none"> <li>• Ensure policies, procedures and codes are complied with at all times.</li> <li>• Ensure all interactions are undertaken in accordance with the behaviours set, as outlined in the Code of Conduct.</li> <li>• 100% attendance at performance reviews.</li> <li>• Completion of induction and orientation within set timeframes.</li> <li>• Positively embrace and adopt change as it occurs.</li> <li>• Ensure arrangements are made so that 100% of courses are attended or completed.</li> <li>• Report risk to the appropriate Windermere personnel and utilise current risk management tools and procedures available.</li> <li>• Protect the rights, safety and wellbeing of children and provide a child safe environment.</li> </ul>

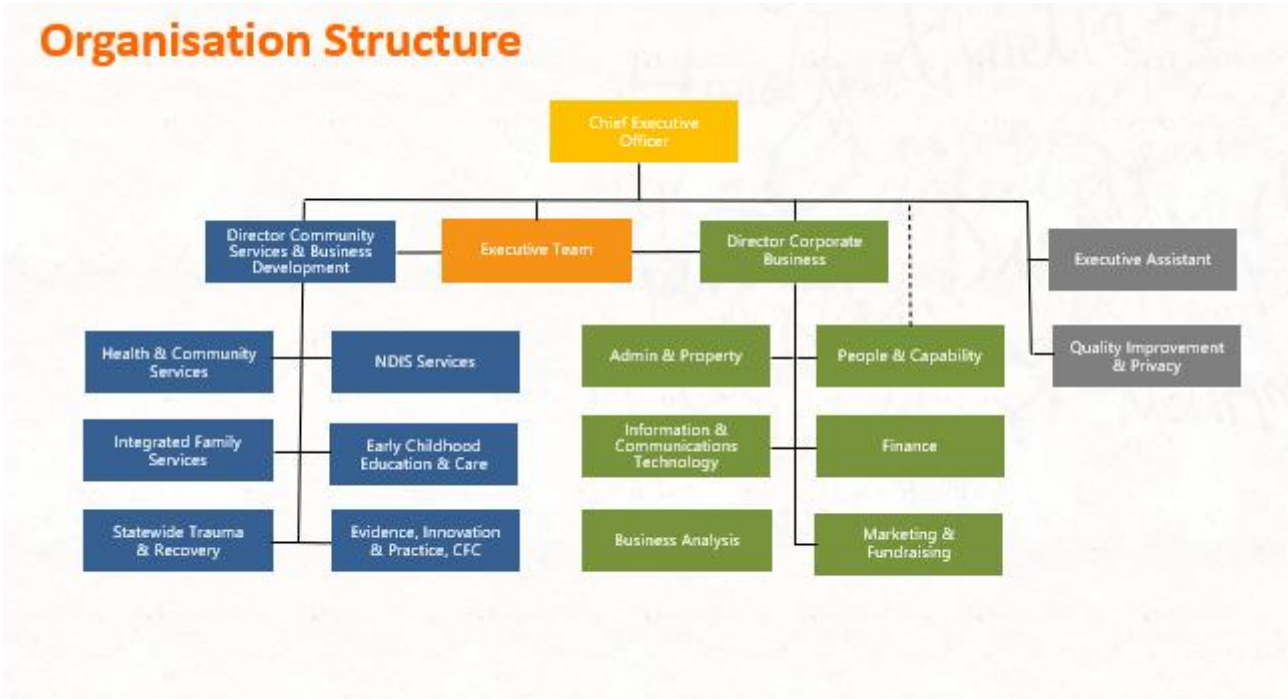
	<ul style="list-style-type: none"> <li>Actively assess, manage and where possible mitigate workplace risk including (OH+S), consumer related risk, reputation risk and personal risk.</li> </ul>	
--	--	--

The employee will be expected to perform other duties outside those set in the position description as directed from time to time which are within the employee’s skill, qualification, experience and competence level to meet the organisation’s operational needs.

The Position Description may be amended from time to time at the organisation’s discretion. Where there is inconsistency between KPIs in this Position Description and those within the Organisation Objectives, the Organisation Objectives will stand.

Windermere is committed to equity & equality for consumers and employees, this by building diverse and inclusive services and work environments, where all peoples from Aboriginal & Torres Strait Islander, CALD, LGBTIQ+ Communities and those living with disability will know and feel accepted, affirmed, safe and celebrated. Windermere is delivering this through the continued development and implementation of our Welcoming and Inclusion Strategy as we seek to provide a diverse workforce at all levels.

**4. ORGANISATIONAL RELATIONSHIPS**



- LINE MANAGER:** Team Leader
- SUPERVISES:** Nil
- INTERNAL RELATIONSHIPS:** VAP Service Manager, VAP team members, other Windermere staff, including People and Capability and Payroll.
- EXTERNAL RELATIONSHIPS:** DoJCS, Victim’s Helpline, Victoria Police, local solicitors and counsellors, other community stakeholders, including local FV service providers.

**5. KEY SELECTION CRITERIA**

- 
- Tertiary qualifications in Social Work, Social Welfare or relevant equivalent (meeting the minimum requirements for working as a Family Violence specialist)

- 
- Minimum 3 years' experience within the community sector, preferably in a trauma related field.
  - Case management, intake and assessment experience, with a particular focus on Family Violence
  - Risk identification and management capability, including experience and expertise with the MARAM framework.
  - Capability to engage in community engagement and secondary consultation.
  - Ability to provide tailored support to victims of crime from diverse backgrounds and communities.
  - Excellent verbal and written communication skills.
  - Willingness to promote and support practices that are inclusive, culturally responsive, safe and accessible.
  - Current Victorian Drivers' Licence.
  - Willingness to undertake relevant pre-employment screening and checks.
  - Right to Work in Australia e.g. Australian Citizen, Permanent Resident or Visa holder with full working rights

**Personal Qualities:**

- Motivated, enthusiastic, and passionate about social justice.
- Self-discipline – able to maintain a consistent and appropriate pattern of behavior under pressure. Is able to recognise own limitations and works with others to ensure plans are achieved.
- Self-confidence - trusting of own abilities. Seeks feedback as appropriate.
- Relationship Building – establishes and maintains relationships at all levels. Builds and maintains strong partnerships with internal and external stakeholders.
- Teamwork –Demonstrates consideration, concern, and respect for others. Collaborative with strong interpersonal skills.

**6. APPLICATION DETAILS**

To maximise your opportunity for employment, it is recommended that you provide the following information:

- Covering application letter briefly addressing the Key Selection Criteria
- Current Resume

---

I have read this document and agree to undertake the duties and responsibilities listed above.

I acknowledge that:

- The PD is an indication of the duties and responsibilities that I may be required to undertake. Additional or other duties and responsibilities may be allocated to me. Where additional training and support is required to fulfil extra or other duties of a similar level of responsibility, it will be provided within the guidelines of Windermere's Training and Development policy.
- The PD will be reviewed regularly in consultation with me.
- The Key Performance Indicators (KPIs), where included in this document, are indicative. KPIs will be set by the immediate supervisor in discussion with me, for each year (or another set period) and my performance reviewed against those KPIs.

**Occupant:**

Name: \_\_\_\_\_

Signature: \_\_\_\_\_ Date: \_\_\_\_\_